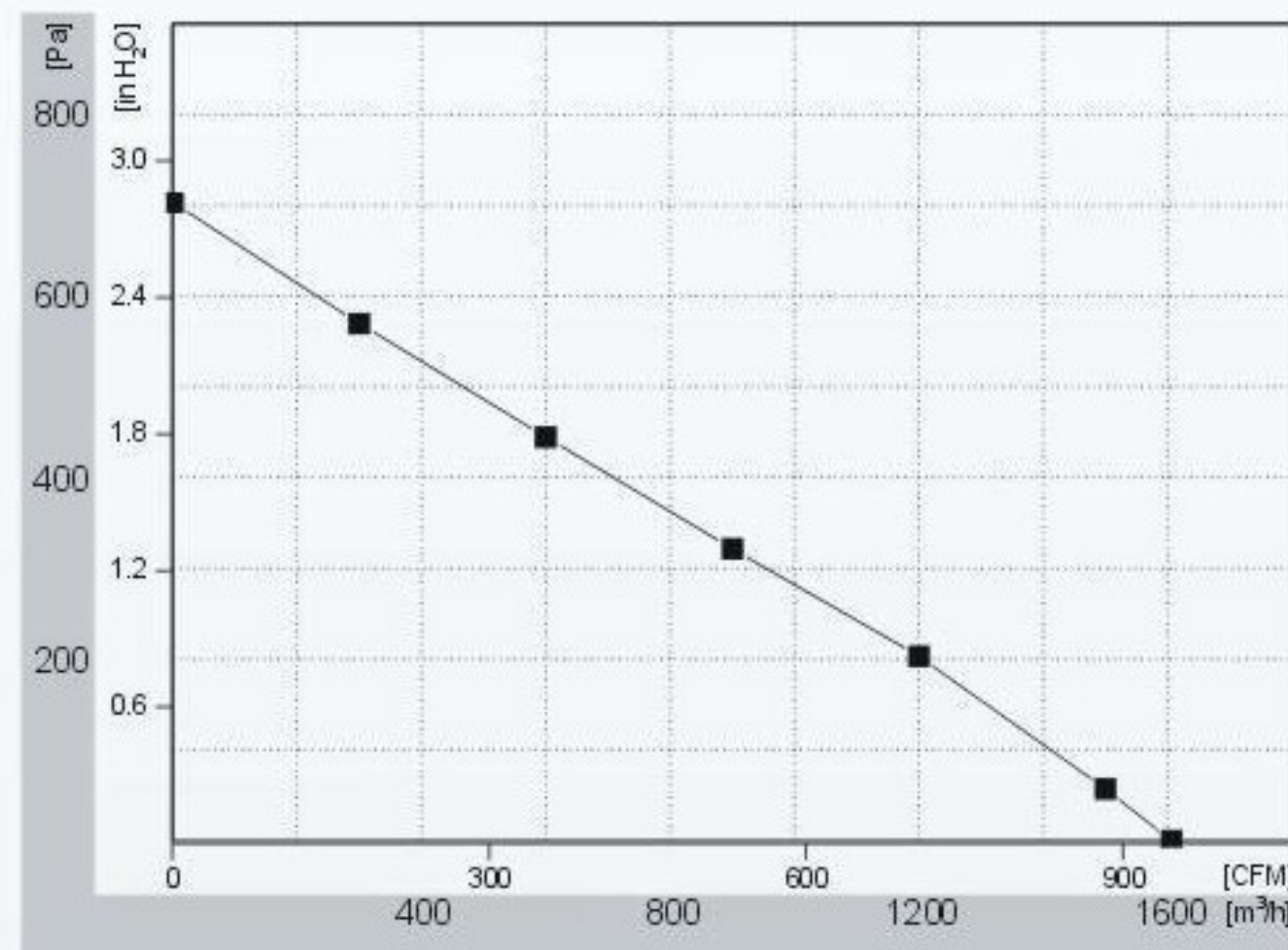
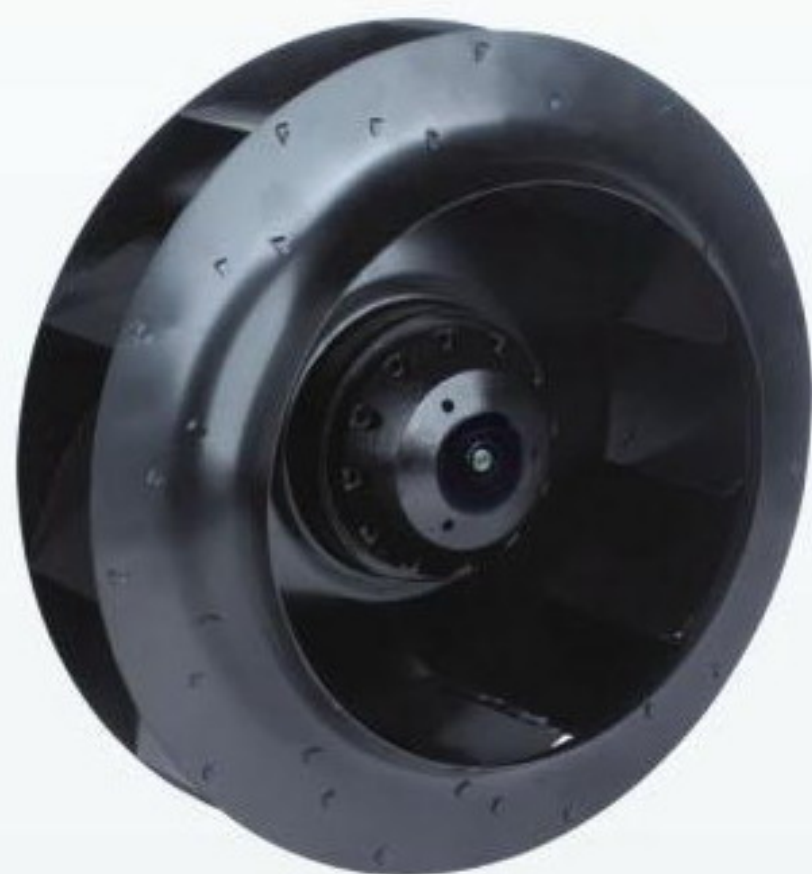


交流后向式离心风机

AC centrifugal fan backward curved, $\phi 280-82$



- 风轮采用镀锌板制成,表面黑色电泳
- 电机防护等级, IP44
- 采用滚珠轴承
- CCC, CE认证

- **Material:** sheet steel, black coat
- **Type of protection:** IP44
- **Bearing:** ball bearings
- **Approvals:** CCC, CE

Type	Motor	Voltage	Frequency	Airflow	Speed	Power	Current	Capacitor	Amb. Temp	Insulation
		VAC	Hz	m³/h	RPM	W	A	μ F/VDB	°C	Class
FH280C	068-045-2	230	50	1600	2550	240	1.05	8/450	-25~+40	F

